

# Crisis Planning in Congregations

Planning Makes All the Difference

# Presenters

Eunice Benton – District Executive, Mid-South District

Connie Goodbread – Program Consultant, Mid-South District

Harlan Limpert – Director of District Services, UUA

Gretchen Alther – UUSC, Rights in Humanitarian Crisis

Susan Suchocki Brown – UUA Trauma Response Ministry

*The objective of  
this workshop is to  
help congregations  
be prepared for a  
crisis.*

# The power of preparation!

*Planning really does  
make a difference.*

# “How to Survive Disaster”

## TIME Magazine - June 9, 2008

Rick Rescorla, the head of security for the Morgan Stanley Dean Whitter at the World Trade Center, was responsible for getting 2687 people from the 73rd floor out to safety on September 11, 2001.

He said, “Knowing where to go was the most important thing. Because your brain - at least mine - just shuts down. When that happens you need to know what to do next.”

**He was successful because he set up a plan and had his people practice it...** They knew what to do.

“How to Survive Disaster” TIME - June 9, 2008

# 5 Disaster Survival Tips

## from TIME - June 9, 2008

- **1. Learn how to text message.** Oftentimes, as in Katrina, text messages will go through when cell phone calls won't.
- **2. Expect smoke.** If you're in an airplane, know how many rows are between you and the exits. If you're at home, know your way to the door without the lights on. Most fire deaths are due to smoke.
- **3. Get to know your neighbors.** They may be your key to survival. The stronger your community is, the better equipped you will be to survive a disaster.
- **4. Practice.** Many people who survived the WTC attacks knew where the staircases were because they did lots of fire drills. Children especially should know where to go in case of emergency, and walk that route until they are familiar with it.
- **5. Keep Fit and Healthy – or at least know your limitations.** For example, overweight people often are less able to move quickly in escape situations that call for speed.

# STRUCTURE FOR OUTLINING CRISIS PLANNING ACTIONS AND TASKS

<b>Individual</b>	<b>Congregation</b>	<b>District UUA</b>	<b>UUA</b>
<b>Before</b>	<b>Before</b>	<b>Before</b>	<b>Before</b>
<b>During</b>	<b>During</b>	<b>During</b>	<b>During</b>
<b>After</b>	<b>After</b>	<b>After</b>	<b>After</b>

# Individual and Family Plans

# BEFORE

Make a family disaster plan

Your plan should include:

How you will stay connected

What you will need to take

What you leave behind

Where you will go

How you will get there

Practice - Practice - Practice

# DURING

**Follow the plan**

**Stay connected**

**Be alert and aware**

**Be helpful**

**Stay in touch with  
your own needs**

# AFTER

**Be patient**

**Stay connected**

**Use the Red Cross online 'Safe and Well'  
page if helpful**

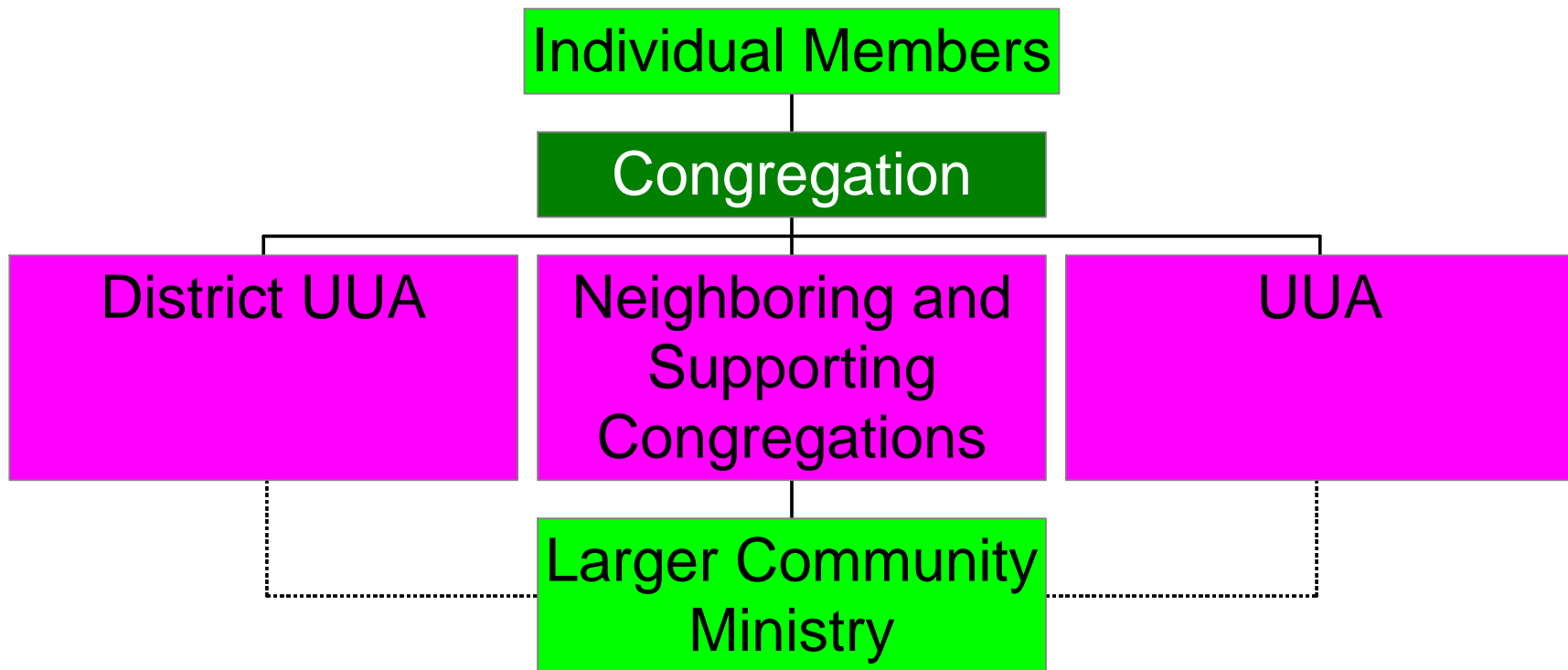
**Be helpful to others**

**Remember everyone has been traumatized**

# Congregation Plans

# HOW WE ARE CONNECTED

Connections Care and Support



# BEFORE

- **Maintain 'Safe Congregation' policies and practices (See separate document.)**
- **Keep a file of 'Members Emergency Contact Info' (See sample documents.)**
- **Check your insurance provider's guidelines**
- **Post a 'Who to Call in a Crisis' document in numerous places**

# BEFORE

- **Store important congregation documents safely !**
- **Designate a 'point people' or a 'Crisis Team' of trusted members**
- **Consider how your congregation can minister to the larger community**

# DURING

**Follow the plan**

**Apply policies**

**Expect emotion**

**Check in**

**Ask for help**

**Be helpful**

**Work with others**

**Share**

# AFTER

**Be a good neighbor**

**Be patient**

**Use the Red Cross online 'Safe and Well'  
page if helpful**

**Trauma lasts a long time**

**Clean up takes a long time**

**Care for yourself**

**Care for others**

# AFTER

## Opportunities for Ministry in the larger community

- How does your congregation see its role within the larger community?
- What can the congregation do for the larger community?

# AFTER

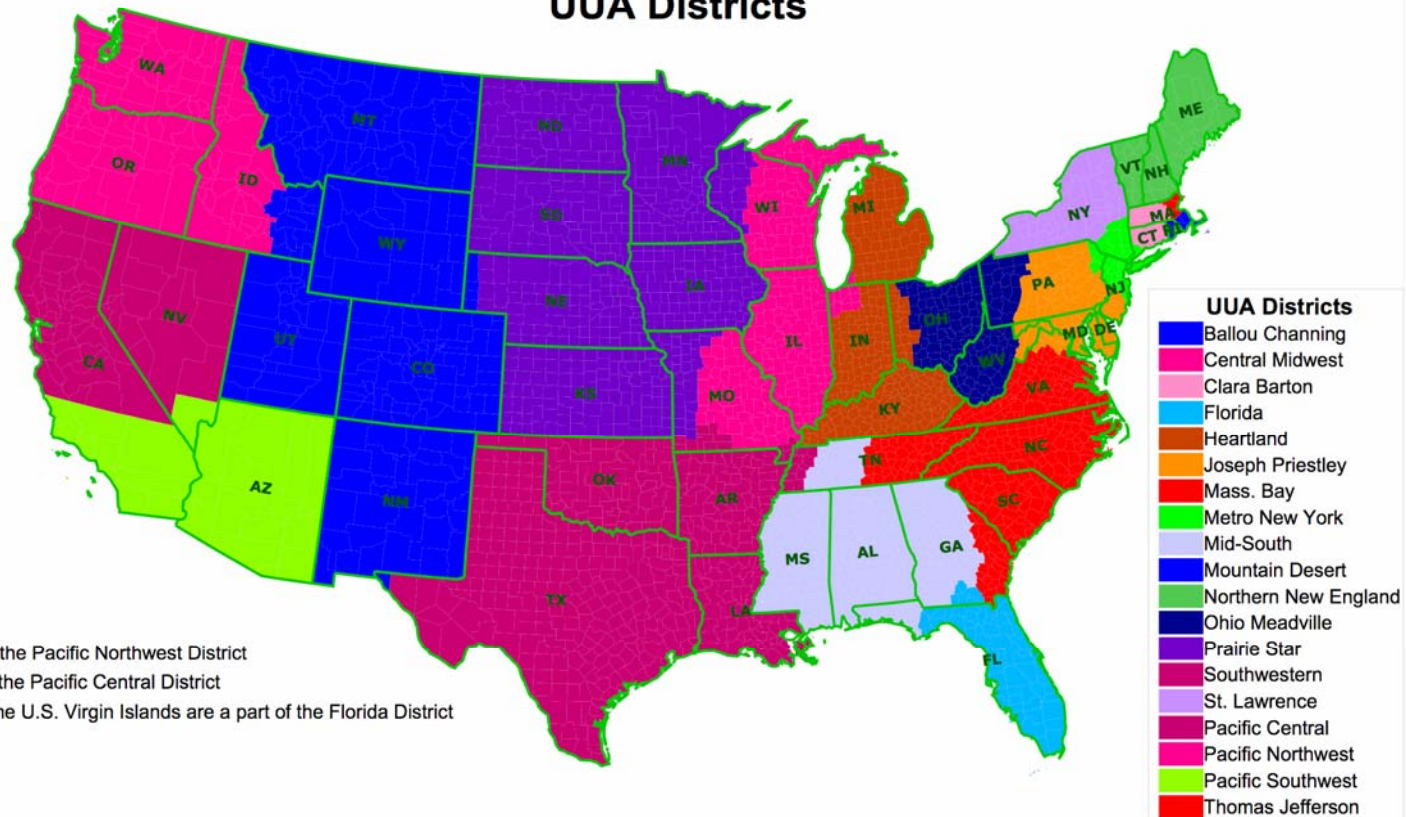
## Opportunities for Ministry in the larger community

- Collection and distribution of aid
- Direct service provision
- Meeting space
- Shelter
- Volunteer Center
- Center for trauma ministry
- Interfaith and Ecumenical work
- Social justice work

# UUA District Plans

## Unitarian Universalist Association of Congregations

### UUA Districts



Alaska is a part of the Pacific Northwest District  
 Hawaii is a part of the Pacific Central District  
 Certain islands in the U.S. Virgin Islands are a part of the Florida District

# BEFORE – Your District Can...

**Encourage the creation of congregational plans**

**Know the point people for each congregation**

**Hold congregational information/documents**

**Conduct disaster trainings**

**Stay connected**

**Offer support & advice**

# DURING – Your District Can...

**Be a communication hub**

**Stay connected**

**Contact the UUA**

**Contact emergency response organizations**

**Contact the UU Trauma Response Ministry  
Team**

# AFTER – Your District Can...

**Follow up with congregational leaders**

**Be aware of trauma and post trauma**

**Companion those most affected**

**Celebrate recovery as it happens**

**Our UUA**

# BEFORE – The UUA Can...

- **Ready the UUA Crisis Management Team**
- **Focus on relationships and connections**
- **Encourage preparedness and offer training**

**UUA Crisis Management Team**

# DURING – The UUA Can...

- **Offer Support**
- **Offer Service**

UUA Crisis Management Team

UUSC has a role in  
domestic disasters

Unitarian Universalist  
Trauma Response Ministry

Is

Available to Districts and Congregations.

# AFTER – The UUA Can...

- **Offer Service**
- **Offer Care**
- **Connect with the Trauma Ministry Team**
- **Connect with UUSC**
- **Stay in relationship**
- **Offer companionship**

# MAIN POINTS

- PLANS AND POLICIES
- POINT PEOPLE READY
- FOLLOW PLANS AND POLICIES
- STAY CONNECTED - *You are not alone*
- ASK FOR HELP - *There is help available*
- BE HELPFUL - *Crises offer opportunities for ministry*
- BE PATIENT - *Remember that trauma has lingering effects*

Find the Information from this presentation:

<http://www.msduua.org>

<http://www.traumaministry.org/>

<http://www.uusc.org/>